

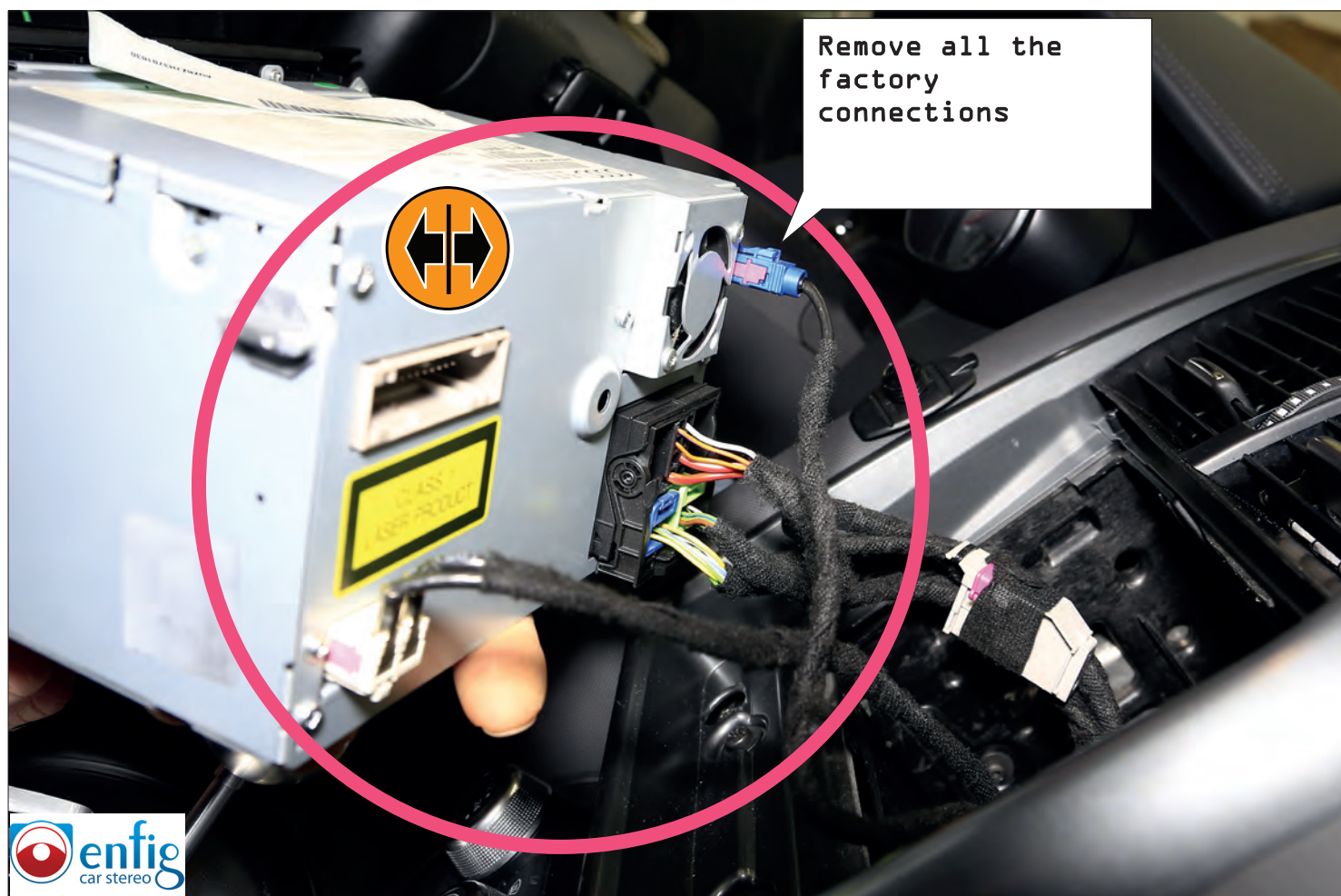
- | | | | |
|----|------------------------|----|---|
| 1. | Face Plate | 4. | Face Plate Bottom Support |
| 2. | Right Mounting Bracket | 5. | Qty 2 M5X2 Screws |
| 3. | Right mounting bracket | 6. | Radio mounting screws (supplied with radio) |

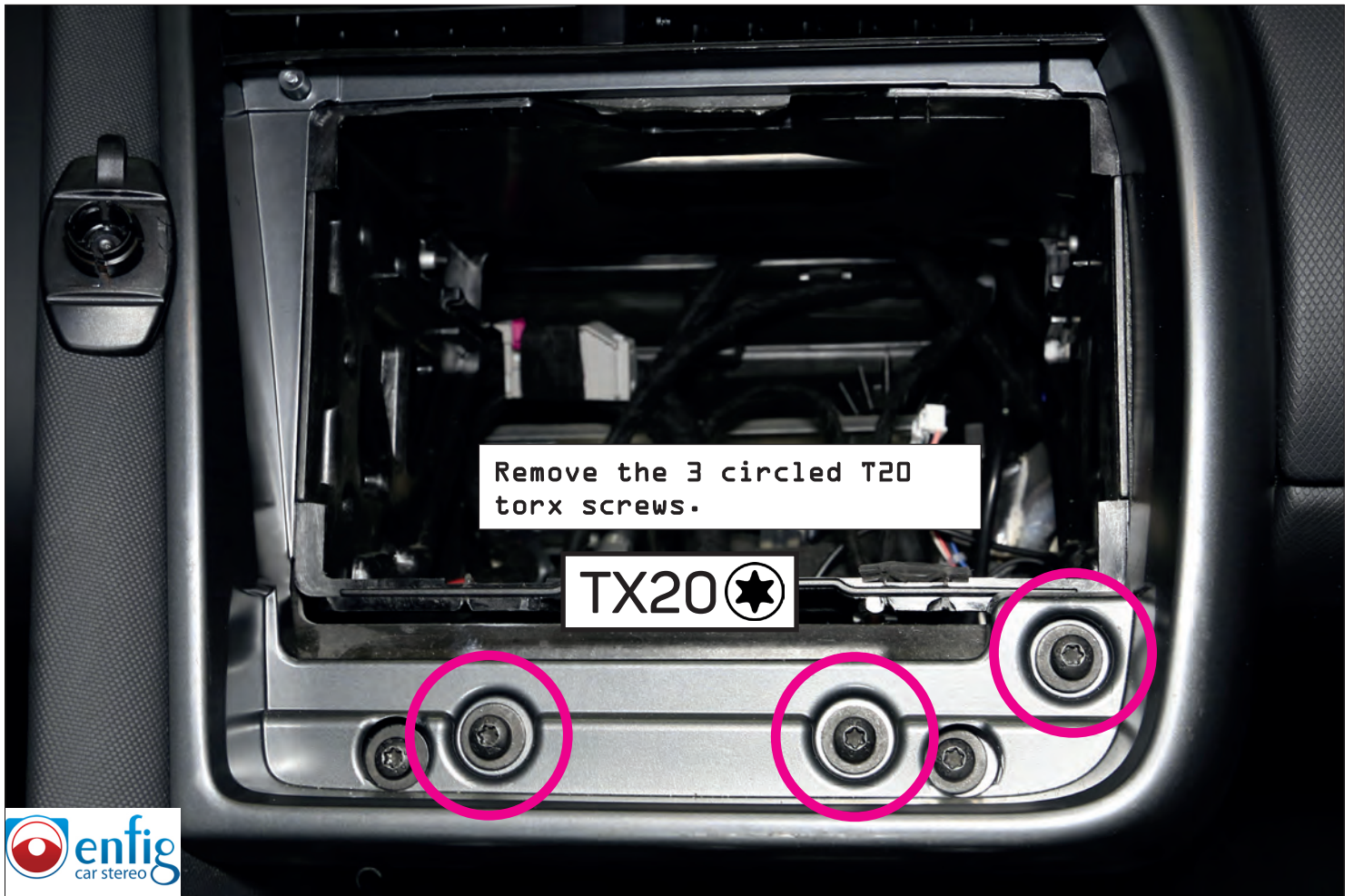
An appropriate installation in observance of these operating instructions is necessary. Please make sure the wiring is arranged so it is not bended or crimped due to the risk of cable break. Make sure that all connections are correct. Route the cable away from moving parts, do not allow the cable to be entangled, pinched or damaged in any way.

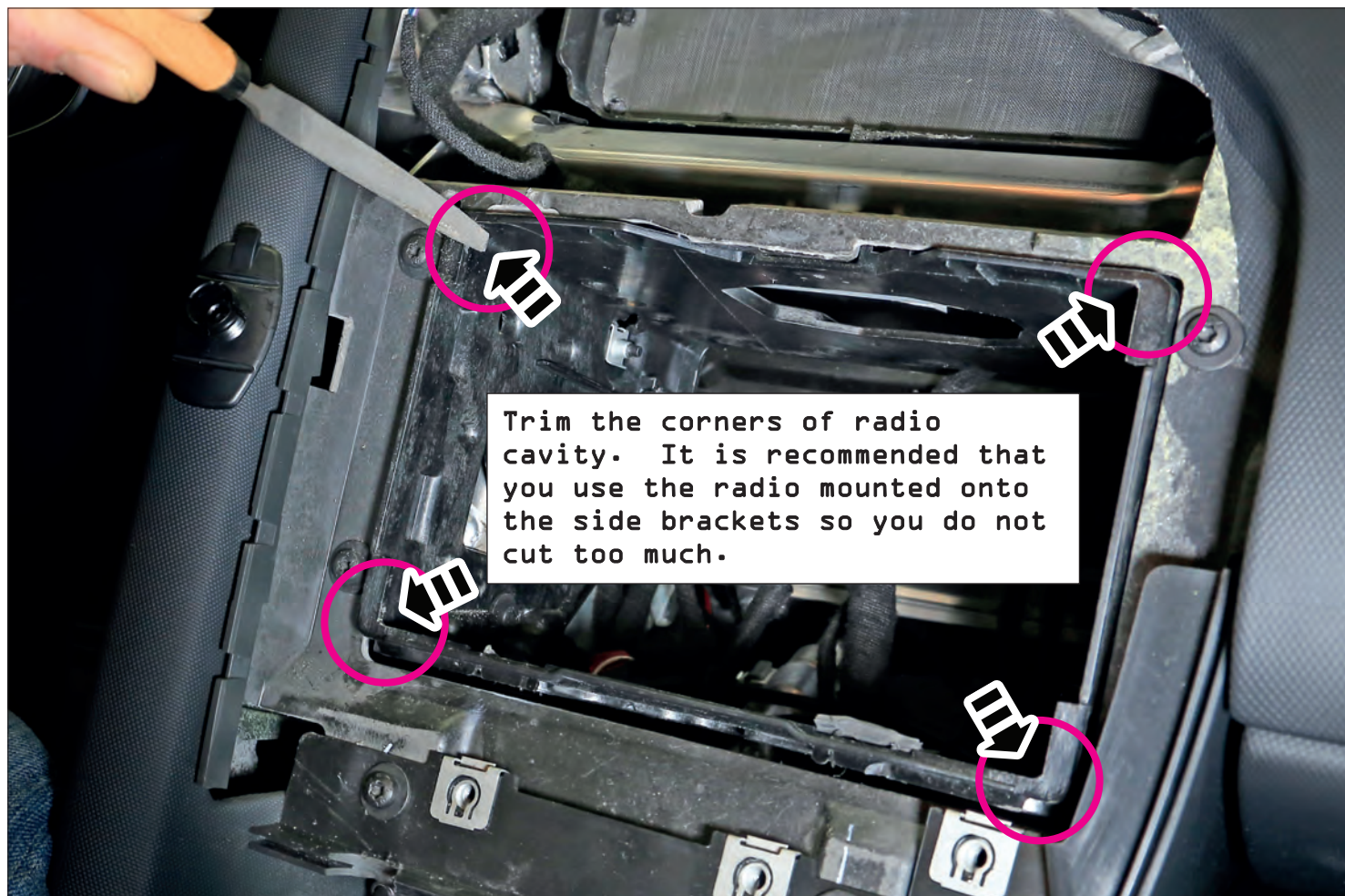
We will not be liable for damage due to improper installation or utilization. Use the specified accessory parts to prevent product failure.

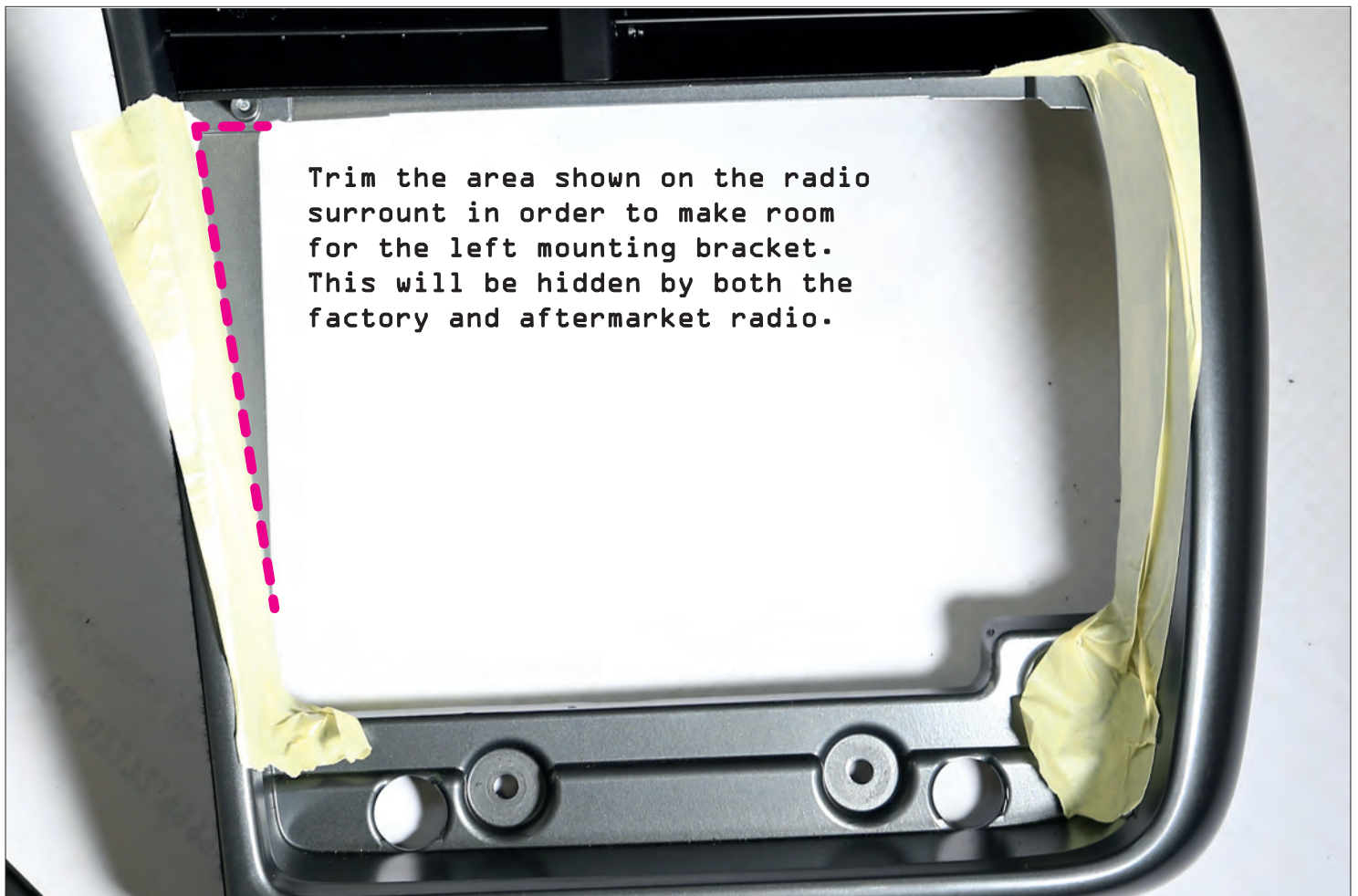
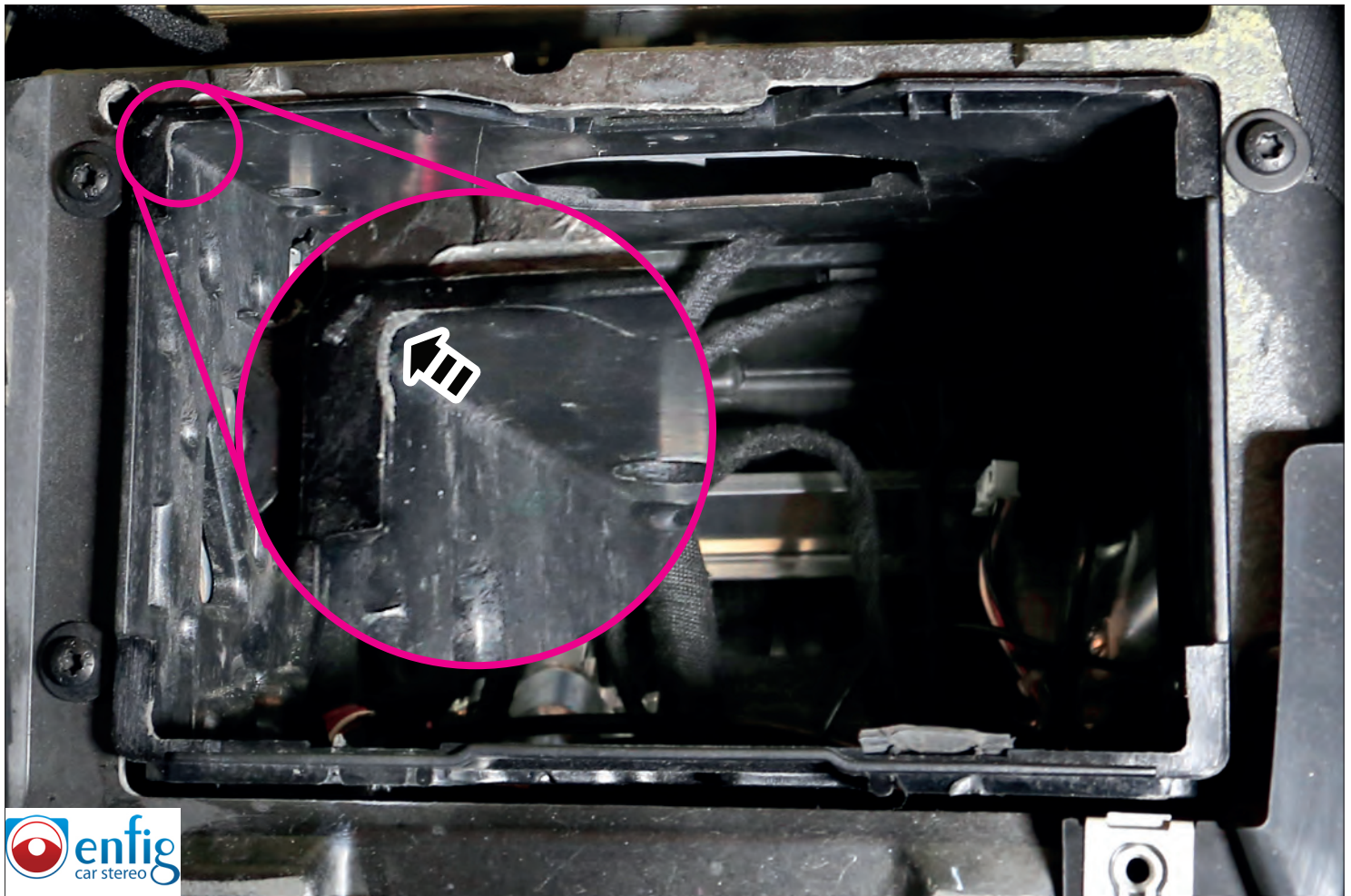
Subject to technical modifications; no responsibility is accepted for the accuracy of this information.













Attach the radio mounting brackets to your radio using the screws supplied with the radio.

